



**AMR** **PEMCO**

---

PROVEN PARTNER IN TECHNOLOGY

[WWW.AMRPEMCO.COM](http://WWW.AMRPEMCO.COM)

# Corporate Overview



- AMR PEMCO and sister companies operate to provide electronic monitoring, controls, communications, tracking, and collision avoidance systems as well as industrial buildings, circuit breakers, dry-type transformers, and automation integration.
- Markets served include global mining, aggregates, tunneling, power generation, utilities, transit, nuclear, water/wastewater, and general industry.
- Primary sales in the U.S., Canada, Mexico, India, South Africa, and South America with sales in many other countries around the world.

AMR est. 1975



ERM est. 1979



CMS est. 1995



PEMCO est. 1960 - Acquired in 2016



PROVEN PARTNER IN TECHNOLOGY

# Delivering Projects Worldwide



# Codes and Certifications



# Experience With Popular Brands

**AMR**  
**PEMCO**

**AB** *Allen-Bradley*  
QUALITY

**ROSEMOUNT**<sup>®</sup>

**ABB**



**SIEMENS**

**Ignition**!  
by inductive automation

**EMERSON**<sup>™</sup>

**Schneider**  
Electric



**SOLAHD**  
Distributed by Gross Automation

**HighTide**  
TECHNOLOGIES

**SQUARE** <sup>™</sup>  
by **Schneider** Electric

**KROHNE**

**AUTOMATIONDIRECT**.com



**RACO**<sup>®</sup>  
SINCE 1948  
REMOTE ALARMS AND CONTROLS

**EH**  
Endress+Hauser

**ICONICS**  
Visualize Your Enterprise<sup>™</sup>

**Wonderware**<sup>®</sup>  
invensys

**ThermoFisher**  
SCIENTIFIC

**SENSAPHONE**<sup>®</sup>  
REMOTE MONITORING SOLUTIONS



GE Infrastructure  
Water & Process Technologies



**Rockwell**  
**Automation**

# Clients and Customers



*NORTHROP GRUMMAN*

**Balfour Beatty**



**TMEiC**



**Rockwell  
Automation**



# Core Capabilities



- Industrial & control buildings (ICB) and equipment enclosures including HVAC systems and design, installation and integration of all types of electrical equipment
- Complete skid mounted systems including switchgear, AC & DC Drives, transformers and control systems
- Complete skid mounted power centers and substations for harsh duty applications
- Custom designed dry type transformers up to 4 MVA and 25kV class.
- Specialty magnetics for custom applications including reactors, inductors, and rectifier duty transformers
- UL and CSA certified control panels with custom enclosure design and fabrication
- 3D modeling capabilities for all enclosures and bus assemblies.
- Electrical, mechanical, and transformer engineering



PROVEN PARTNER IN TECHNOLOGY

# Water & Wastewater



- In 2002, AMR established AMR Aquamation as an automation group to provide SCADA, wireless telemetry, PLC panel building, and instrumentation integration services to water and wastewater facilities located in the states of Virginia, North Carolina, Tennessee and West Virginia.
- AMR Aquamation services focus on anything related to the SCADA, instrumentation, controls, and monitoring of a water/wastewater project. The extent of our scope of work depends entirely on the client and/or their engineering design firm, but we offer consultation and installation services from the initial planning stages all the way through final walk-through





**WATER & WASTEWATER  
INDUSTRY PRODUCT  
SOLUTIONS**

# Control Panels



## Features:

- UL® 508A Listed Panel Shop with CSA certification available
- Off-the-Shelf Hardware and Software Components
- Turnkey Services including – Design, Build, Program, Install, and Service
- Complete, Custom Metal Fabrication

## Benefits:

- Experienced panel builder with on-staff engineers
- Automation services available for a total project solution
- Low Cost Hardware and Production for Cost Sensitive Projects
- Faster Project Approval, Coordination and Completion to meet any deadline
- Quicker and Easier Repairs for long term maintenance



# E-Houses and Control Buildings



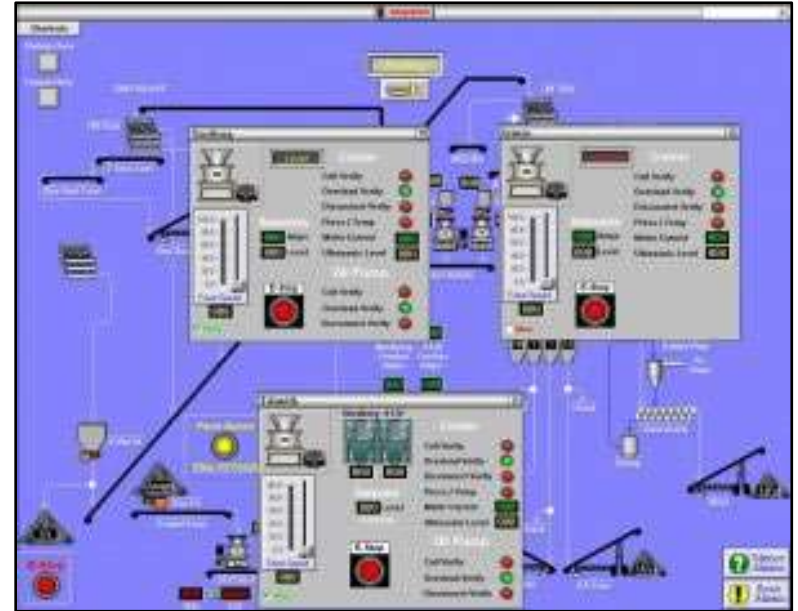
## Industrial Control Buildings

- Custom Control Panels, Copper Bus Assemblies, Termination Compartments, and other accessories available
- E-Houses, Deposit on Base Enclosures (DOBE), skid-mounted, and other styles
- Mild, stainless, and galvanized steel construction available
- Complete installation and electrical integration of all equipment
- Installation to NEC guidelines for acceptable work practices and clearances
- Engineering services for electrical integration



# SCADA Systems Integration

- SCADA is an acronym for “Supervisory Control And Data Acquisition”, typically utilizing a computer system or logic controller for gathering and analyzing real time data then providing automated control. SCADA systems are commonly used to monitor and control a plant or facility in most industries.
- The system gathers information, such as the low level of a tank, transfers the information back to the central office and alerts the operator of the situation before carrying out necessary steps, such as determining if the level is critical and valves should be opened to re-fill the tank, as well as displays the information in a logical and organized fashion. SCADA systems can be relatively simple, or incredibly complex.





*For more information please contact us at:*

+1.276.928.1712

SALES@AMRPEMCO.COM

WWW.AMRPEMCO.COM



PROVEN PARTNER IN TECHNOLOGY