

AMR PEMCO offers a range of solutions designed to meet the specific requirements of each client. Beginning with the consulting stage, and following through the various phases to the on-site installation, we strive to be a true partner in technology. Every solution is designed and manufactured per your specifications, even if those specifications are only a hypothetical idea that needs our engineering team to help you plan.



### *Comprehensive Projects*

- Engineering & Design
- Industrial Control Buildings
- Electrical Power Distribution
- Instrumentation & Controls
- Automation Systems Integration
- Communications Technologies
- HMI / PLC Programming
- On-site Installation Assistance
- Field Service & Maintenance





**INDUSTRIAL BUILDINGS AND SKIDS**

- Gas Chromatograph Buildings
- SCADA and Instrumentation Buildings
- Electrical Houses (e-House)
- Motor Control Center (MCC) Buildings
- Power Distribution Centers (PDC)
- Skid mounted, portable, and compact designs available for easy relocation
- CE, UL, and CSA Certifications Available
- All designs available with steps, ramps, railings, HVAC, and other features as needed



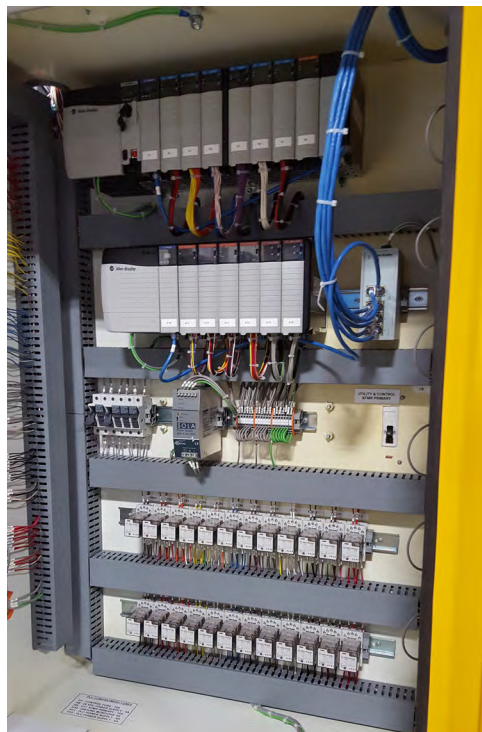
## CONTROL PANELS AND INSTRUMENTATION

- Variable Frequency Drives (VFDs), Motor Controls, Station and Plant Automation
- Electrical designs for primary voltages up to 34.5 KV, and ratings from 100 KVA through 10,000 KVA
- Dry-type, or liquid-filled, transformers based upon customer preference or application
- Ethernet, Wi-Fi- Two-Way Radio, Cellular, and Satellite communications for local and/or remote networking
- Flow controllers, gas analyzers, temperature sensors, and other instrumentation of any brand



### Unlimited Applications

- Measurement Solutions
- Metering Skids
- E-Houses
- MCC Buildings
- Instrumentation Skids and Houses
- Mobile Substations
- Fixed Substations
- Medium-to-High Voltage Switchgear
- Pump Skids
- LACTs
- Remote Gas Well Sites
- Compressor Stations
- Oil Terminals
- Transfer Stations
- Power Plants
- Offshore Drilling Rigs
- Data Network Centers
- And many others we do not even know about yet!





### OUR TEAM

- Over 250 Employees including
- 25+ Engineering and Technical Personnel
- 57+ years of manufacturing & automation experience
- Four manufacturing facilities with 300,000+ Sq Ft
- 100+ Ton lifting capacity
- 80 & 30 Ton RTG Cranes
- High Voltage Testing Facility
- Turret Punches, Lasers, Forming Machines, Robotic Welders, Printers, Paint Booths, and many other manufacturing tools



### ENGINEERING CAPABILITIES

- Electrical, mechanical, transformer, and magnetics engineers on-staff
- Flexible engineering designs to meet the unique needs of every project
- 3-D modeling and AutoCAD designs
- ISO9000 Compliant Design, Process, and Testing

### CERTIFICATIONS AND STANDARDS

- UL 508A panel shop
- ISO9000 Compliant Design, Process, and Test
- VFD, PLC, and HMI trained technicians for automation integrations and programming
- AWS/ASME/API certified welders



### AMR PEMCO's QUALITY POLICY

It is AMR PEMCO, Inc.'s Quality Policy to "Design, Manufacture, and Remanufacture Products that comply with Our Customer Requirements and the Quality Requirements of the AMR PEMCO Quality System". The implementation of this policy is inclusive to all employees. Compliance with the objectives of the Quality Assurance Manual is required by all personnel.

FOR A PRICE QUOTE OR ADDITIONAL INFORMATION  
CALL 1-800-428-7800 OR SEND E-MAIL TO [SALES@AMRPEMCO.COM](mailto:SALES@AMRPEMCO.COM)

#### CONTACT:

+1.276.928.1712  
[sales@amrpemco.com](mailto:sales@amrpemco.com)  
[www.amrpemco.com](http://www.amrpemco.com)

PO Box 234  
12187 North Scenic Hwy  
Rocky Gap, Virginia 24366  
USA