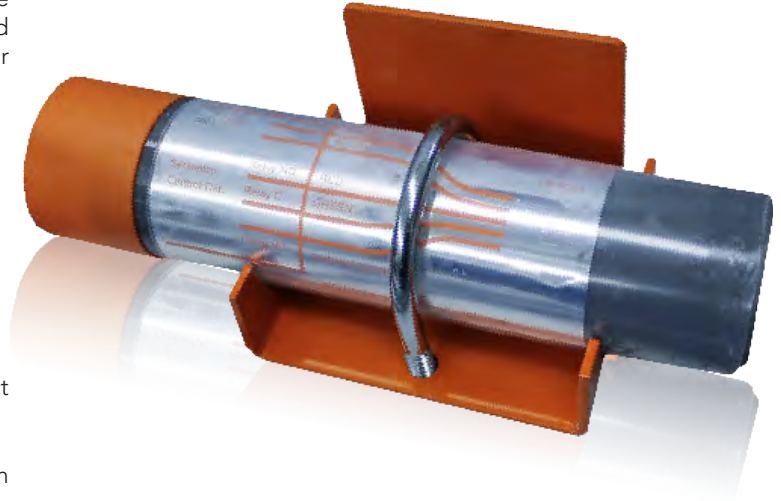


WHAT IS IT?

The "Little Speedy" LS-3000 Series is a compact "all-in-one" Slip or Sequence Control Switch utilizing a ferrous metal inductive pickup. The encapsulated housing contains the associated speed, delay, and control circuitry sealing the internal components from dust and water. LED indicators and adjustment controls are hidden beneath the orange cap for protection from the elements and accessibility.



FEATURES AND BENEFITS

- Simple installation near suitable conveyer roller with direct connection to handling system controls
- Fully encapsulated cylinder for dust and moisture protection
- Integrated adjustment settings for speed cut off and time delay
- LED indicator for easy calibration

MODEL	LS-3000	LS-3000-LR	LS-3010	LS-3020	LS-3030	LS-3040
DESCRIPTION	Zero Speed Sensor	Low RPM Speed Sensor	No Delay Zero Speed Sensor	Start Delay Zero Speed Sensor	4-20mA Zero Speed Sensor	Pulse Type Zero Speed Sensor
DIMENSIONS	8.0" L x 2.0" (203.2 mm x 50.8 mm)	8.0" L x 2.0" (203.2 mm x 50.8 mm)	8.0" L x 2.0" (203.2 mm x 50.8 mm)	8.0" L x 2.0" (203.2 mm x 50.8 mm)	4.5" L x 2.25" (114.3 mm x 57.15 mm)	4.5" L x 2.25" (114.3 mm x 57.15 mm)
UNIT WEIGHT	5lbs (2.27kg)	5 lbs (2.27kg)	5 lbs (2.27kg)	5 lbs (2.27kg)	5 lbs (2.27kg)	5 lbs (2.27kg)
INPUT POWER	120 VAC	120 VAC	120 VAC	120 VAC	12-28 VDC	120 VAC
RPM	60-400	20-60	60-400	60-400	60-400	60-400
TYPE	Dry Contact	Dry Contact	Dry Contact	Dry Contact	4-20mA	Pulse
LED	YES	YES	YES	YES	YES	YES
START DELAY	NO	NO	NO	0-10 Seconds	NO	NO
STOP DELAY	0-10 Seconds	0-10 Seconds	NO	0-10 Seconds	NO	NO